

Snare 2017

Isaac Beaty

8's



R ----- L ----- R -----



L ----- R ----- L -----

Bucks

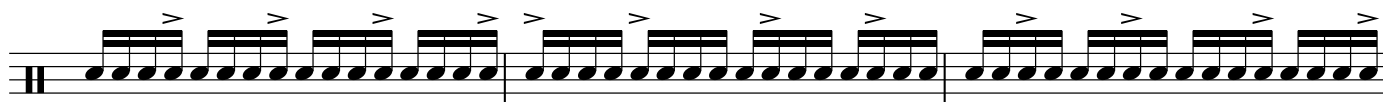
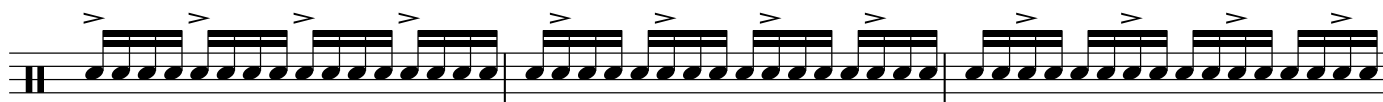


R ----- L ----- R -----



L ----- R ----- L -----

16th Accent



A/B



Musical notation for the A/B exercise, consisting of three staves. The first staff has a treble clef and a double bar line at the beginning. It contains three measures of eighth-note patterns. Below the staff are dashed lines with 'R' and 'L' indicating fingerings: R - - - - - L - - - - - R - - - - - L - - - - -. The second staff has a bass clef and a double bar line at the beginning. It contains three measures of eighth-note patterns. Below the staff are dashed lines with 'R' and 'L' indicating fingerings: R - - - - - L - - - - - R - - - - - L - - - - -. The third staff has a treble clef and a double bar line at the beginning. It contains three measures of eighth-note patterns. Below the staff are dashed lines with 'R' and 'L' indicating fingerings: R - - - - - L - - - - - R - - - - - L - - - - -.

Chicken and a Roll



Musical notation for the 'Chicken and a Roll' exercise, consisting of two staves. The first staff has a treble clef and a double bar line at the beginning. It contains two measures of eighth-note patterns. The second staff has a bass clef and a double bar line at the beginning. It contains two measures of eighth-note patterns.

16th Timing 4-2-1



Musical notation for the 16th Timing 4-2-1 exercise, consisting of four staves. The first staff has a treble clef and a double bar line at the beginning. It contains two measures of eighth-note patterns. The second staff has a bass clef and a double bar line at the beginning. It contains two measures of eighth-note patterns. The third staff has a treble clef and a double bar line at the beginning. It contains two measures of eighth-note patterns. The fourth staff has a bass clef and a double bar line at the beginning. It contains two measures of eighth-note patterns.

Paradiddle-diddle Builder

R L R R L R L L R L R R L L R L R R L L R L R R L L

R L R R L L R L R R L R L L R L R R L L R L R R L R L L

Flam Tap Builder

R ----- IR R R IR R R IR R R IR R R

IR R rL IR R rL IR R IR rL R IR IR R rL L IR R rL L IR R rL L IR R rL L

IR

Quads 2017

Isaac Beaty

8's

Musical notation for the '8's' exercise, consisting of two staves. The first staff begins with a treble clef and a double bar line. It contains four measures of eighth-note patterns. Below the staff, the letters 'R', 'L', 'R', and 'L' are positioned under the first, second, third, and fourth measures respectively, with dashed lines extending across the measures. The second staff also begins with a treble clef and a double bar line, and contains four measures of eighth-note patterns. Below the staff, the letters 'L', 'R', 'L', and 'L' are positioned under the first, second, third, and fourth measures respectively, with dashed lines extending across the measures.

Bucks

Musical notation for the 'Bucks' exercise, consisting of two staves. The first staff begins with a treble clef and a double bar line. It contains four measures of eighth-note patterns. Above each eighth note, there is a greater-than sign (>) indicating an accent. Below the staff, the letters 'R', 'L', 'R', and 'L' are positioned under the first, second, third, and fourth measures respectively, with dashed lines extending across the measures. The second staff also begins with a treble clef and a double bar line, and contains four measures of eighth-note patterns. Above each eighth note, there is a greater-than sign (>) indicating an accent. Below the staff, the letters 'L', 'R', 'L', and 'L' are positioned under the first, second, third, and fourth measures respectively, with dashed lines extending across the measures.

16th Accent

Musical notation for the '16th Accent' exercise, consisting of three staves. Each staff begins with a treble clef and a double bar line. The first staff contains four measures of sixteenth-note patterns. Above each sixteenth note, there is a greater-than sign (>) indicating an accent. The second staff contains four measures of sixteenth-note patterns, also with accents above each note. The third staff contains four measures of sixteenth-note patterns, also with accents above each note.

A/B

Musical notation for the A/B exercise, consisting of three staves. The first staff contains four measures of music with hand indicators 'R' and 'L' below. The second staff contains four measures with hand indicators 'R' and 'L'. The third staff contains four measures with hand indicators 'R' and 'L'. The notation includes eighth and sixteenth notes, rests, and slurs.

Chicken and a Roll

Musical notation for the 'Chicken and a Roll' exercise, consisting of two staves. The first staff begins with a repeat sign and contains four measures of music. The second staff contains four measures of music. The notation features continuous eighth-note patterns.

16th Timing 4-2-1

Musical notation for the '16th Timing 4-2-1' exercise, consisting of four staves. Each staff contains four measures of music. The notation features continuous eighth-note patterns with various rests and slurs.

Paradiddle-diddle Builder

R L R R L R L L R L R R L L R L R R L R L L R L R R L L

R L R R L L R L R R L L R L R R L R L L

Flam Tap Builder

R ----- IR R R IR R R IR R R IR R R

IR R rL IR R rL IR R IR rL R IR IR R rL L IR R rL L IR R rL L IR R rL L

IR

Bass 2017

Isaac Beaty

8's

Two staves of musical notation for the '8's' exercise. The top staff shows a continuous eighth-note pattern. The bottom staff shows a split pattern with 'R' and 'L' labels above the notes. Below the bottom staff, dashed lines indicate the foot assignments: L, R, L.

8's Split 1

Two staves of musical notation for the '8's Split 1' exercise. The top staff shows a continuous eighth-note pattern. The bottom staff shows a split pattern with 'R' and 'L' labels above the notes. Below the bottom staff, dashed lines indicate the foot assignments: L, R.

8's Split 2

Two staves of musical notation for the '8's Split 2' exercise. The top staff shows a continuous eighth-note pattern. The bottom staff shows a split pattern with 'R' and 'L' labels above the notes. Below the bottom staff, dashed lines indicate the foot assignments: L, R.

8's Split 3

Two staves of musical notation for the '8's Split 3' exercise. The top staff shows a continuous eighth-note pattern. The bottom staff shows a split pattern with 'R' and 'L' labels above the notes. Below the bottom staff, dashed lines indicate the foot assignments: L, R.

16th Accent

Musical notation for the '16th Accent' exercise, consisting of four staves. Each staff begins with a double bar line and a vertical line, indicating the start of the exercise. The notation features a series of sixteenth-note groups, each with an accent (>) above it. The groups are arranged in a 2x2 grid pattern across the staves.

A/B

Musical notation for the 'A/B' exercise, consisting of three staves. Each staff begins with a double bar line and a vertical line. The notation features a series of eighth-note groups, each with an accent (>) above it. The groups are arranged in a 2x2 grid pattern across the staves.

Chicken and a Roll

Musical notation for the 'Chicken and a Roll' exercise, consisting of one staff. The notation begins with a double bar line and a vertical line, followed by a series of eighth-note groups, each with an accent (>) above it. The groups are arranged in a 2x2 grid pattern across the staff.

16th Timing 4-2-1



Flam Tap Builder



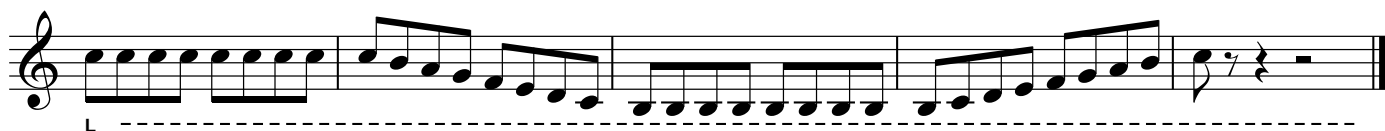
Paradiddle-diddle Builder



Front Ensemble

Isaac Beaty

Singles



Spatial Awareness



Green Scales

Two staves of musical notation for 'Green Scales'. The first staff contains two measures of eighth-note runs: the first measure has notes G4, A4, B4, C5, B4, A4, G4; the second measure has notes F4, G4, A4, B4, A4, G4, F4. The second staff contains two measures of eighth-note runs: the first measure has notes E4, F4, G4, A4, G4, F4, E4; the second measure has notes D4, E4, F4, G4, F4, E4, D4. The piece concludes with a whole note G4 and a double bar line.

Summertime (Double Vertical)

Four staves of musical notation for 'Summertime (Double Vertical)'. Each staff consists of double vertical eighth-note chords. The first staff is in 6/8 time and contains five measures of chords: G4-A4-B4, G4-A4-B4, G4-A4-B4, G4-A4-B4, G4-A4-B4. The second staff is in 2/4 time and contains five measures of chords: G4-A4-B4, G4-A4-B4, G4-A4-B4, G4-A4-B4, G4-A4-B4. The third staff is in 2/4 time and contains five measures of chords: G4-A4-B4, G4-A4-B4, G4-A4-B4, G4-A4-B4, G4-A4-B4. The fourth staff is in 6/8 time and contains five measures of chords: G4-A4-B4, G4-A4-B4, G4-A4-B4, G4-A4-B4, G4-A4-B4. The piece concludes with a whole note G4 and a double bar line.